

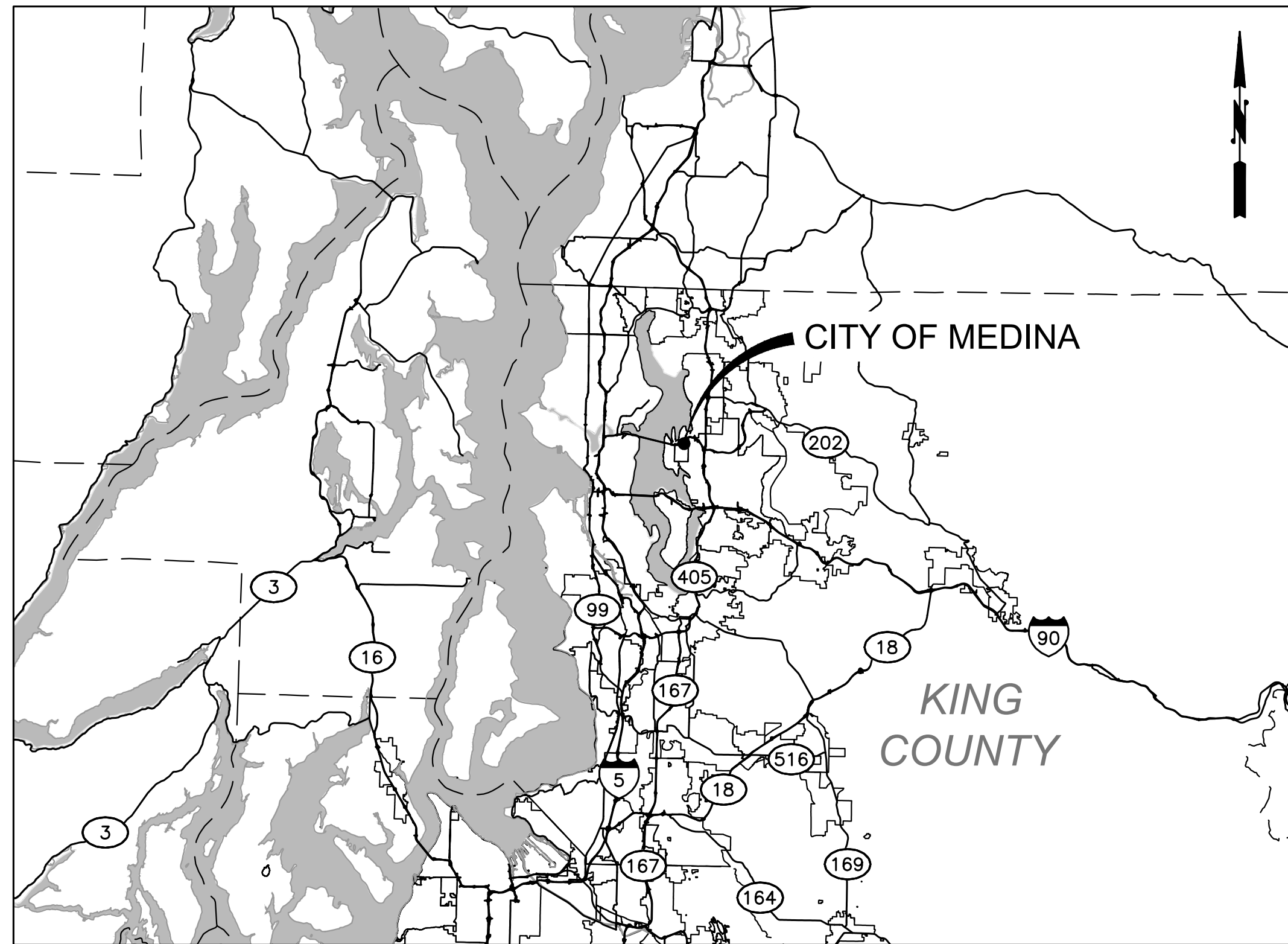
CITY OF MEDINA

KING COUNTY

WASHINGTON

OVERLAKE DRIVE EAST BRIDGE REPAIR

BRIDGE NO. 1014C

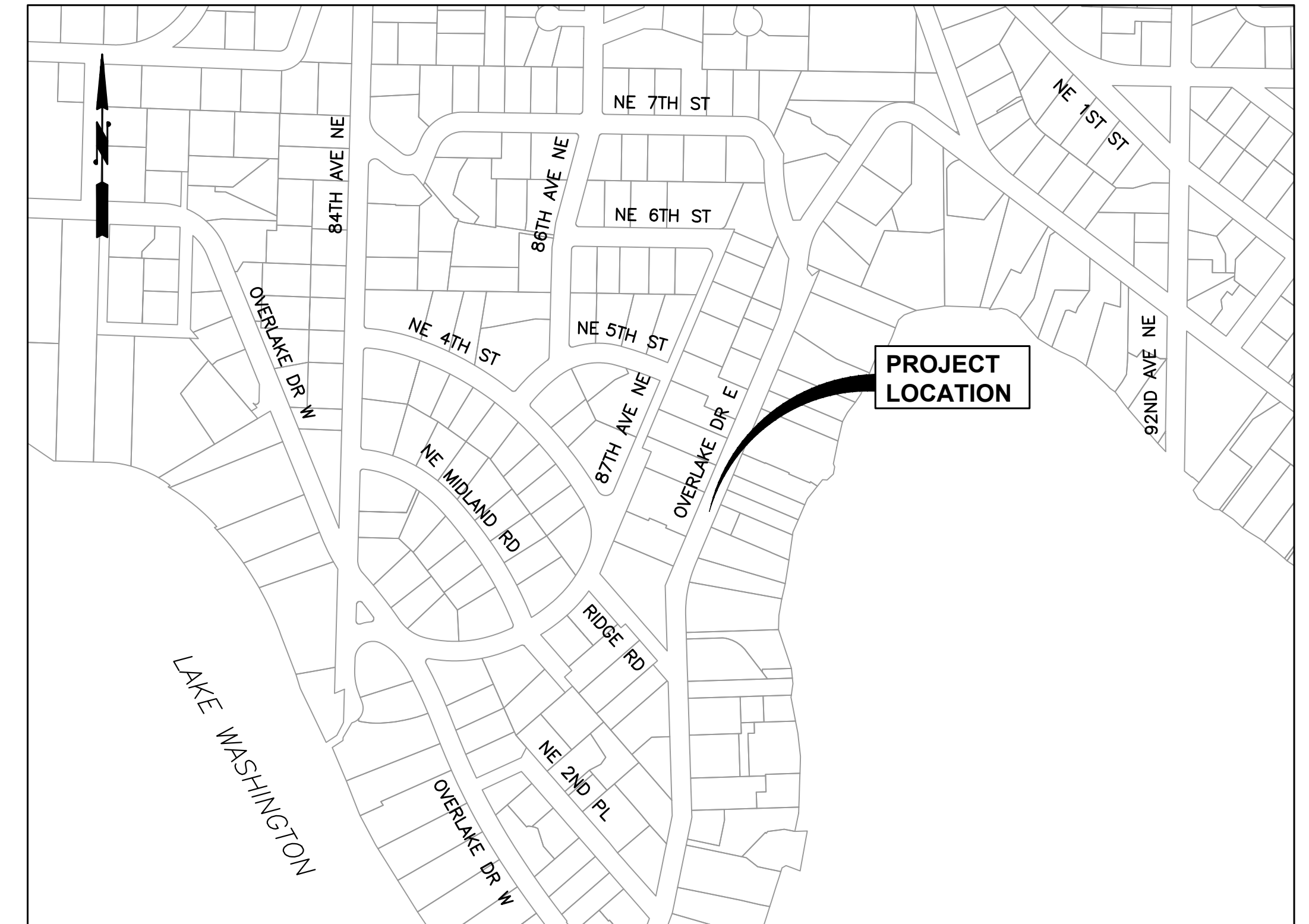


VICINITY MAP
NOT TO SCALE

SHEET LIST TABLE	
SHEET NUMBER	SHEET DESCRIPTION
0	COVER SHEET
C-1	SITE PLAN
C-2	SITE PLAN CONT.
S-1	EXISTING BRIDGE PLAN
S-2	EX. BRIDGE SECTION AND PROCEDURE FOR PILE CAP REPLACEMENT NOTES
S-3	PHOTO DETAILS
TC-1	TRAFFIC CONTROL PLAN AND DETAILS

CITY OFFICIALS

JESSICA ROSSMAN
MAYOR



PROJECT LOCATION MAP
NOT TO SCALE

HARINI GOKUL

MICHAEL LUIS

LAURA BUSTAMANTE

HEIJA NUNN

CITY COUNCIL

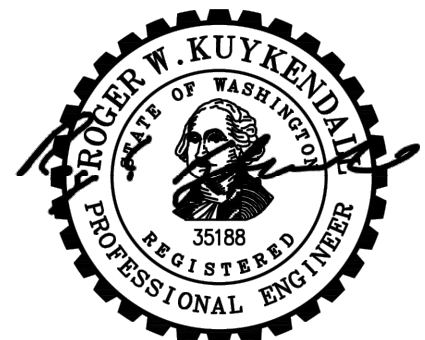
RANDY REEVES
DEPUTY MAYOR

JEFF SWANSON
CITY MANAGER

RYAN OSADA
PUBLIC WORKS DIRECTOR



MARCH 2026
G&O JOB #25439.01



3/17/2026

CITY OF MEDINA



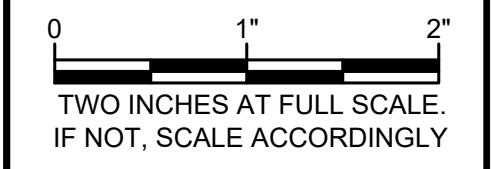
**OVERLAKE DRIVE
 EAST BRIDGE REPAIR**

No.	DATE	REVISION

ISSUED FOR:

BID SET

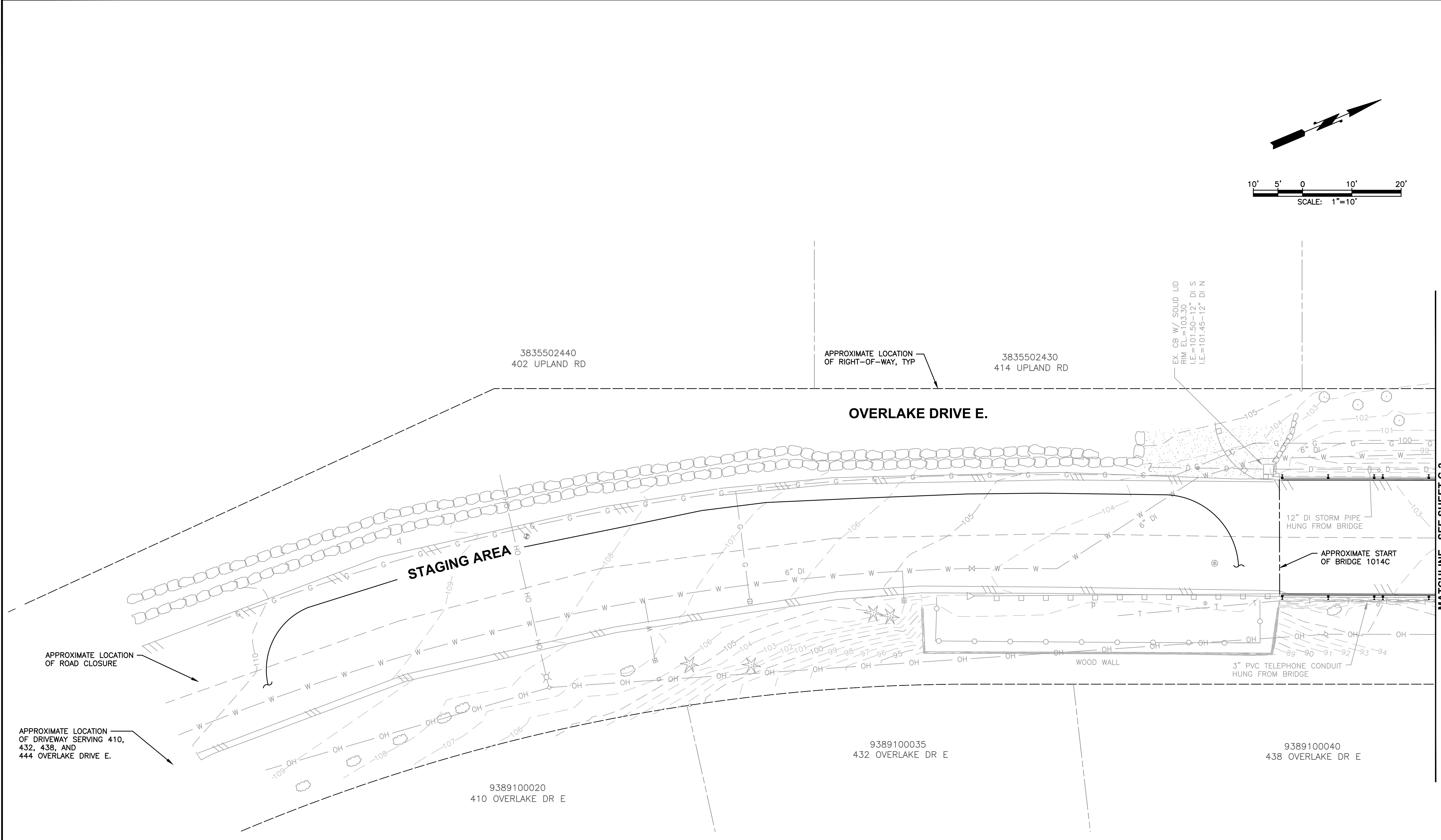
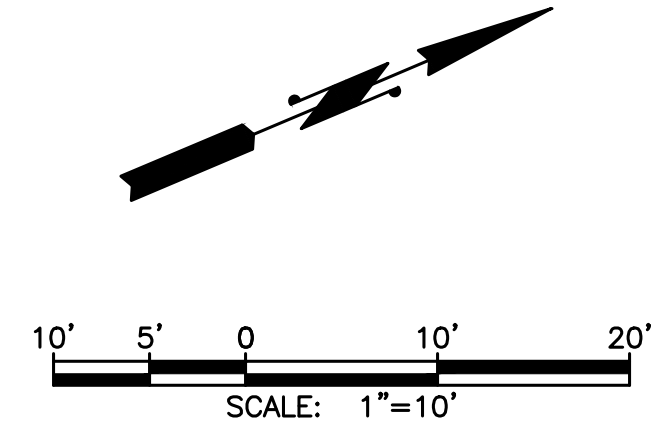
ISSUE DATE:	MARCH 2026
APPROVED BY:	RWK
CHECKED BY:	RWK
DRAWN BY:	SEM
DESIGNER:	RWK
G & O JOB NO.:	25439.01
FILE:	SITE PLAN.DWG



CIVIL

SITE PLAN

SHEET: **C-1** OF: **2**



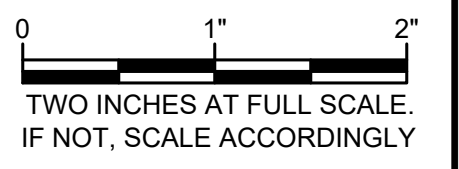
GENERAL NOTES

- CAUTION: BURIED UTILITIES.** COORDINATE WITH UTILITY COMPANIES REGARDING LOCATION, DEPTH, AND PROTECTION OF EXISTING UTILITIES.
- COORDINATE WITH CITY PRIOR TO ANY VEGETATION REMOVAL OR TRIMMING.

M:\Medina\25439.01 Overlake Drive East Bridge Repair\Plans\Civil\Site Plan.dwg, 3/17/2026 1:26 PM, STEPHEN MOORE

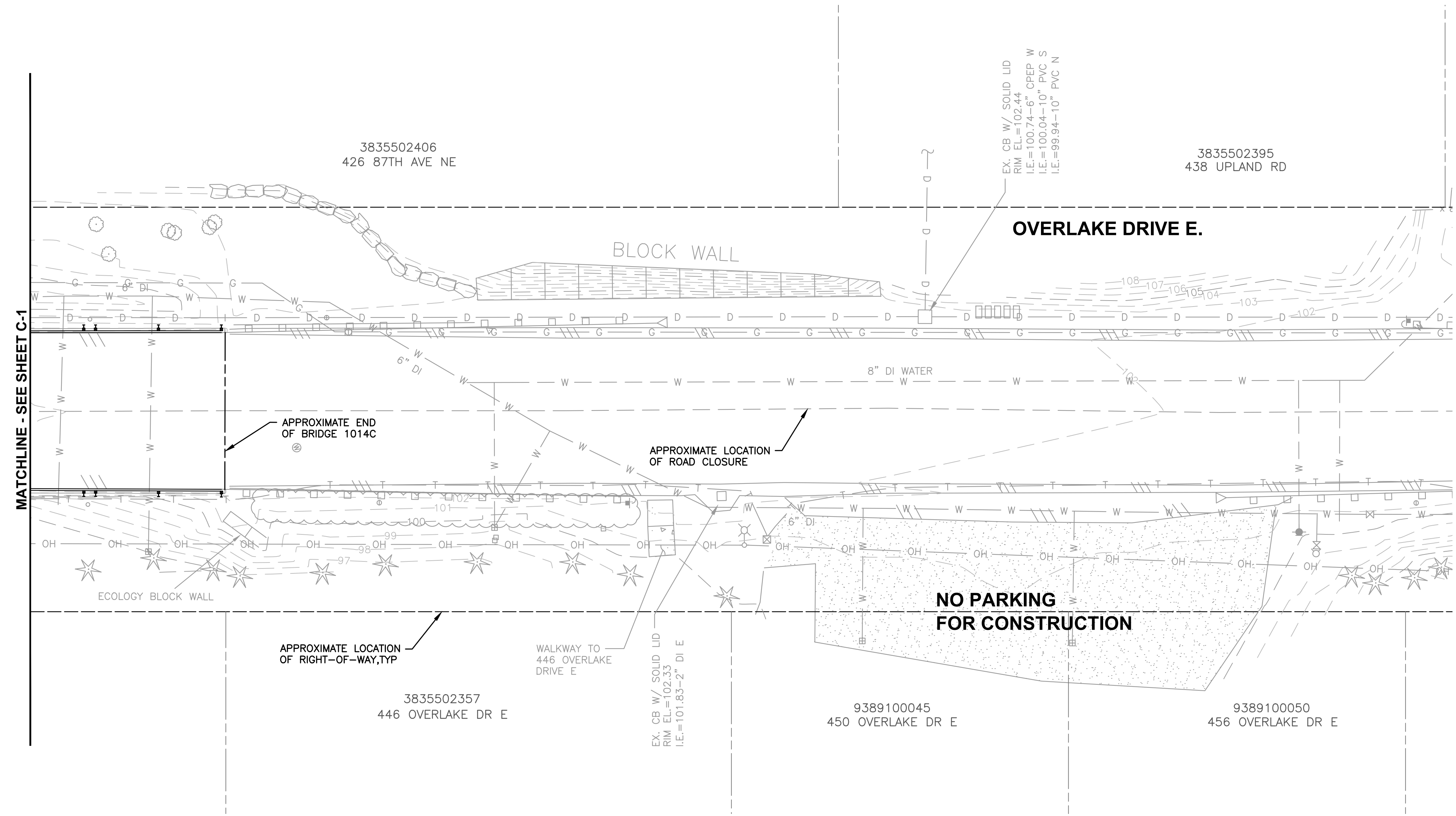
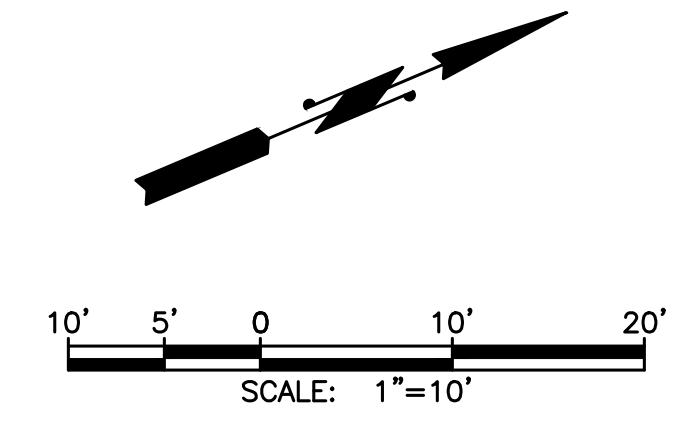


No.	DATE	REVISION
ISSUED FOR:		
BID SET		
ISSUE DATE:	MARCH 2026	
APPROVED BY:	RWK	
CHECKED BY:	RWK	
DRAWN BY:	SEM	
DESIGNER:	RWK	
G & O JOB NO.:	25439.01	
FILE:	SITE PLAN.DWG	



CIVIL

SITE PLAN



GENERAL NOTES

- CAUTION: BURIED UTILITIES.** COORDINATE WITH UTILITY COMPANIES REGARDING LOCATION, DEPTH, AND PROTECTION OF EXISTING UTILITIES.
- COORDINATE WITH CITY PRIOR TO ANY VEGETATION REMOVAL OR TRIMMING.

M:\Medina\25439.01 Overlake Drive East Bridge Repair\Plans\Civil\Site Plan.dwg, 3/17/2026 1:26 PM, STEPHEN MOORE



CITY OF MEDINA



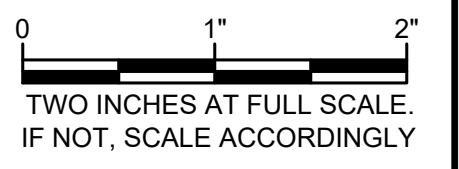
OVERLAKE DRIVE
 EAST BRIDGE REPAIR

No.	DATE	REVISION

ISSUED FOR:

BID SET

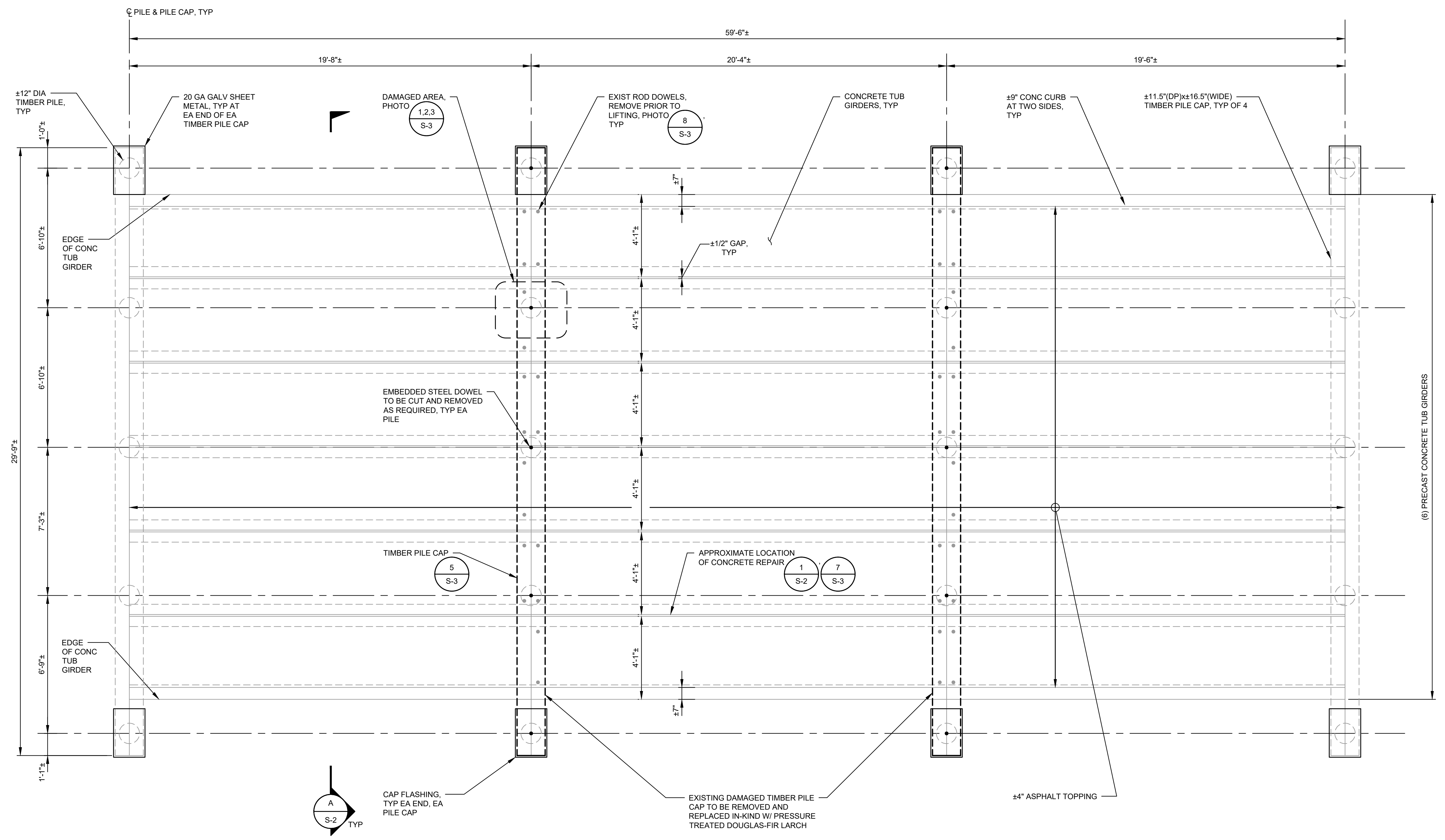
ISSUE DATE:	MARCH 2026
APPROVED BY:	AQ
CHECKED BY:	ZK
DRAWN BY:	RAH
DESIGNER:	ZK
G & O JOB NO.:	25439.01
FILE:	S_BRDG_PLN.DWG



STRUCTURAL

EXISTING BRIDGE PLAN

SHEET: **S-1** OF: **3**



BRIDGE REPAIR PLAN
 SCALE: 3/8"=1'-0"

- NOTE:**
- ALL DIMENSIONS ARE BASED ON FIELD MEASUREMENTS AND SHALL BE VERIFIED IN THE FIELD PRIOR TO STARTING WORK.
 - TIMBER BEAMS SHALL BE PRESSURE TREATED WITH WATERBORNE PRESERVATIVE TO AWPA UC4B.

M:\Medina\25439.01 Overlake Drive East Bridge Repair\Plans\Structural\S_BRDG_PLN.dwg, 3/17/2026 1:26 PM, STEPHEN MOORE



CITY OF MEDINA



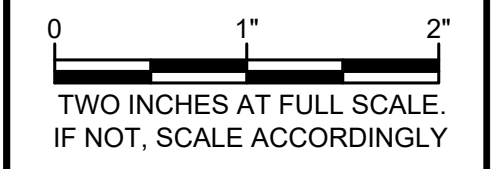
**OVERLAKE DRIVE
EAST BRIDGE REPAIR**

No.	DATE	REVISION

ISSUED FOR:

BID SET

ISSUE DATE:	MARCH 2026
APPROVED BY:	AQ
CHECKED BY:	ZK
DRAWN BY:	RAH
DESIGNER:	ZK
G & O JOB NO.:	25439.01
FILE:	S_BRDG_PLN.DWG



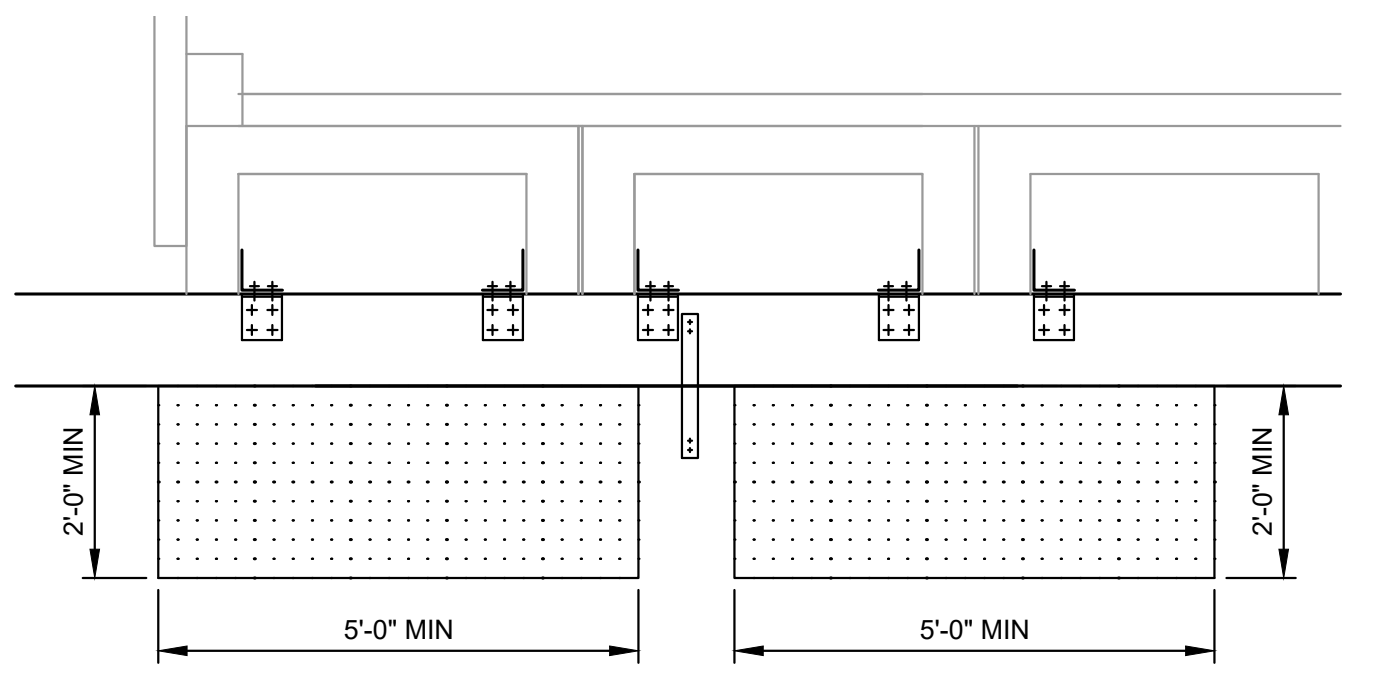
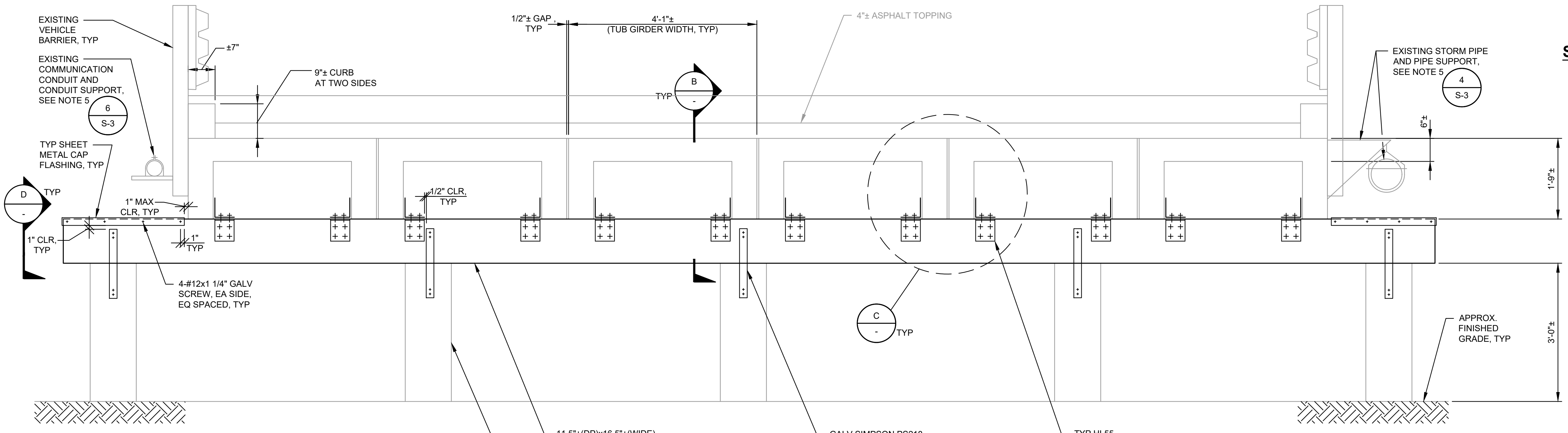
STRUCTURAL

**EXISTING BRIDGE
SECTION AND
PROCEDURE FOR PILE
CAP REPLACEMENT
NOTES**

SHEET: **S-2** OF: **3**

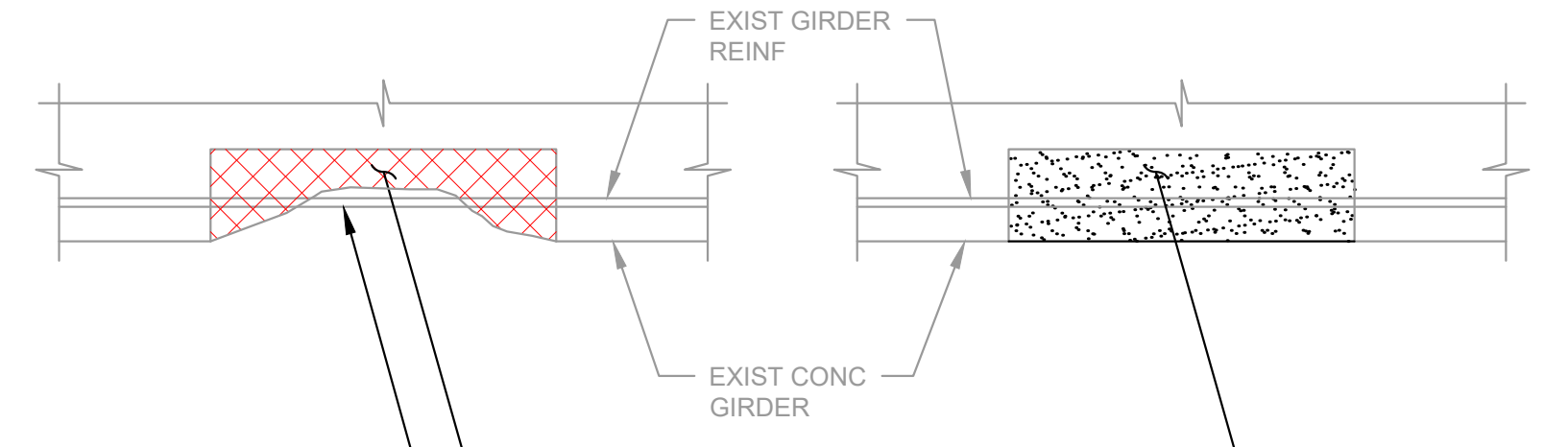
**SUPPLEMENTAL STRUCTURAL
ABBREVIATIONS:**

CL	CENTER LINE
CONC	CONCRETE
DIA	DIAMETER
EA	EACH
EQ	EQUAL
EXIST	EXISTING
GALV	GALVANIZED
PL	PLATE
TYP	TYPICAL



TYPICAL MINIMUM CONSTRUCTION ENVELOPE

**SECTION
A
S-1**
SCALE: 3/4"=1'-0"



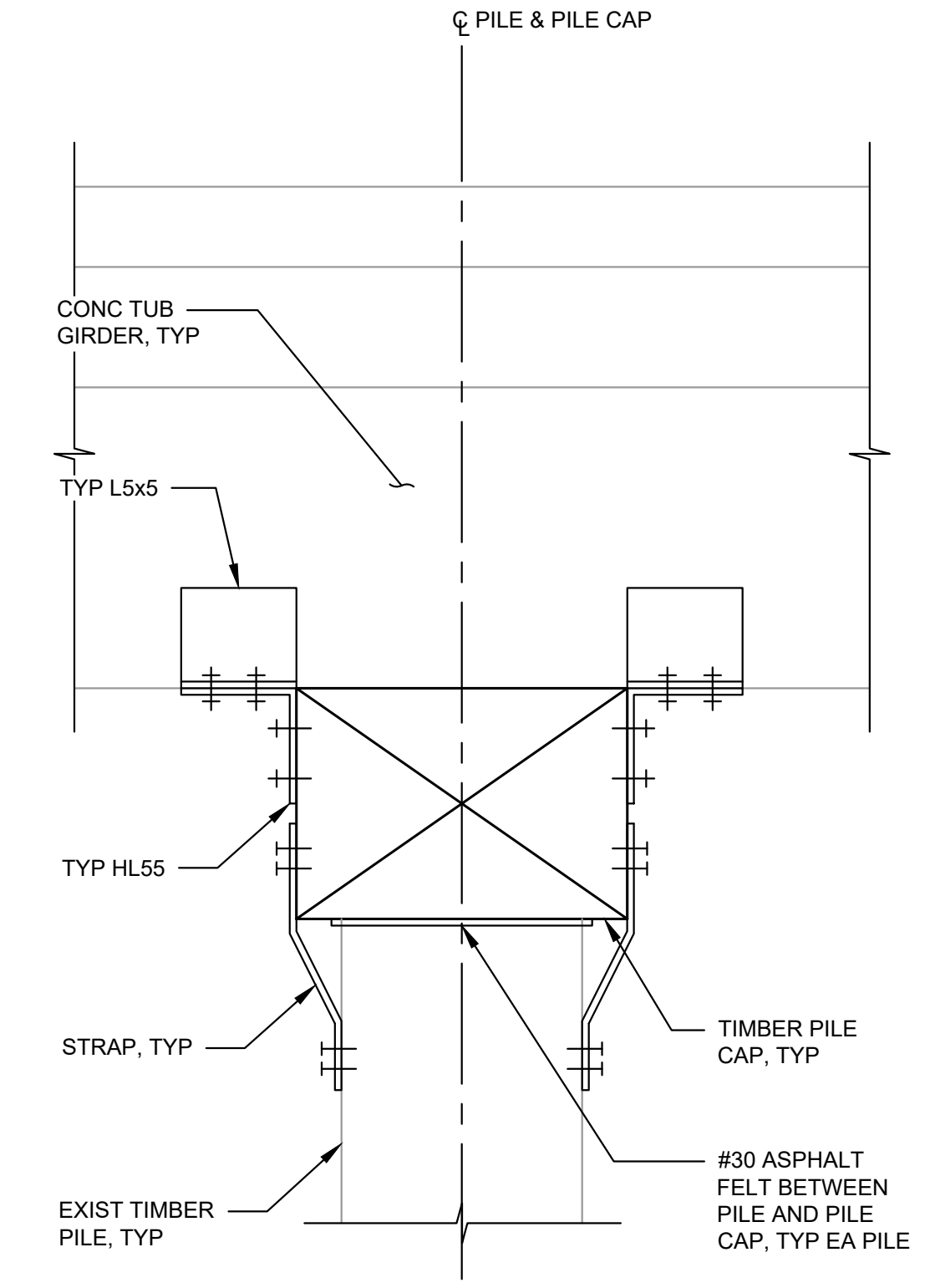
ABRASE EXPOSED REINFORCEMENT TO REMOVE CORROSION PRODUCTS AND CLEAN TO SOUND METAL. COAT EXPOSED REINFORCEMENT WITH A CORROSION-INHIBITING EPOXY COATING PRIOR TO PLACEMENT OF REPAIR MATERIAL IN ACCORDANCE WITH WSDOT STANDARD SPECIFICATION SECTION 6-02.3(25).

REMOVE SPALLING CONCRETE DOWN TO SOUND CONCRETE. A MINIMUM OF 3/4" CLEAR AROUND STEEL, AND PREPARE SURFACE PER MFR'S RECOMMENDATIONS

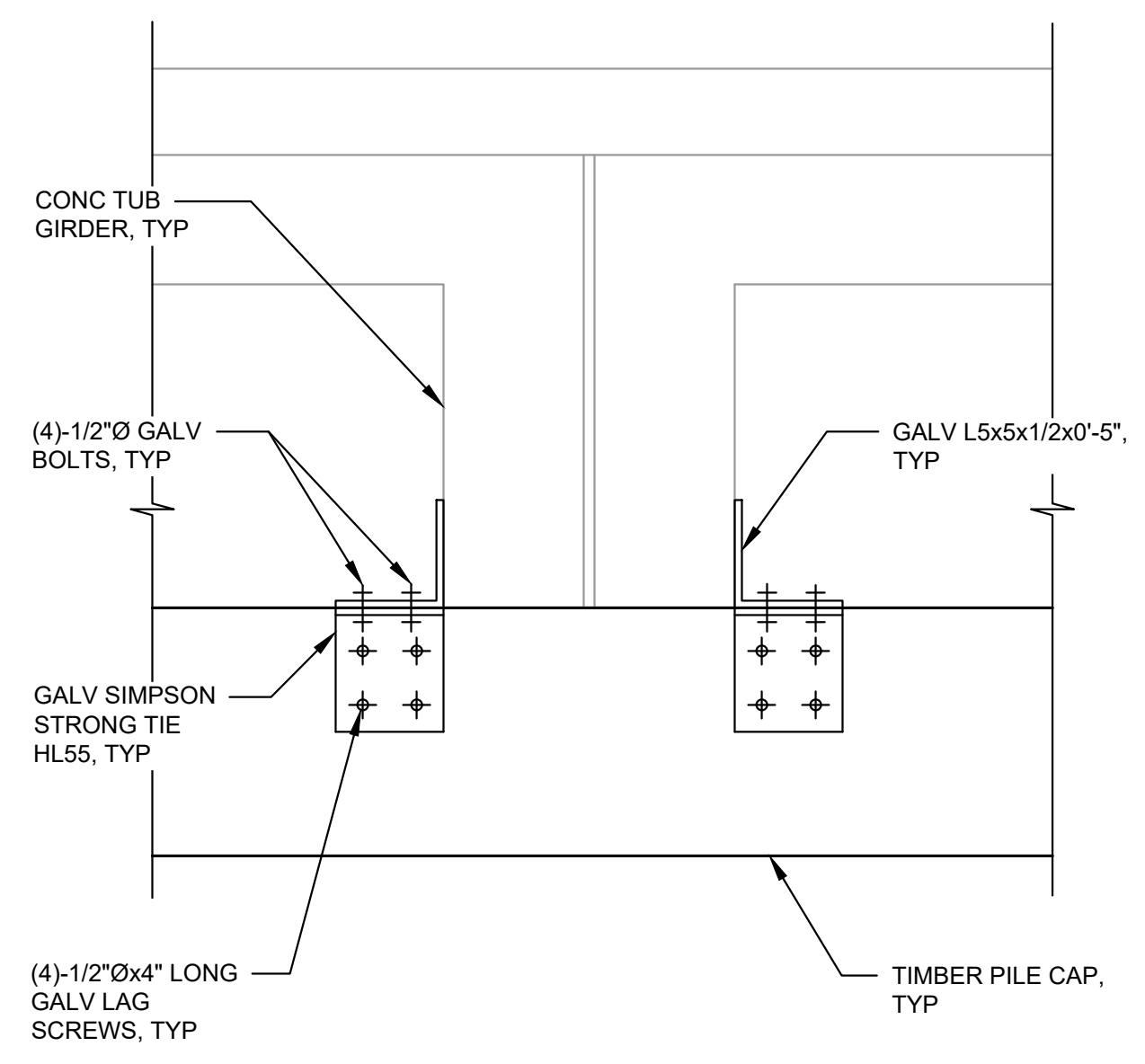
INSTALL SIKKA 123 PLUS GROUT PER MFR'S RECOMMENDATIONS. FORM TO ASBULT GEOMETRY

NOTE:
APPROXIMATELY 10 SQUARE FEET OF REPAIR IS ANTICIPATED. SEE PHOTO DETAIL 7 ON SHEET S-3 FOR TYPICAL CONDITION.

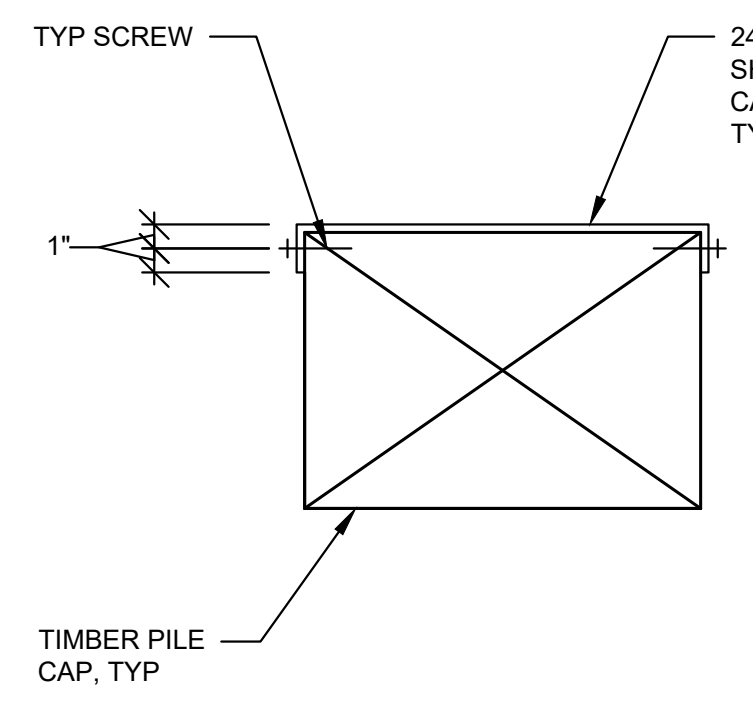
**1
S-1** **CONCRETE REHABILITATION AT TUB GIRDER**
NTS



**SECTION
B**
SCALE: 1 1/2"=1'-0"



**SECTION
C**
SCALE: 1 1/2"=1'-0"



**SECTION
D**
SCALE: 1 1/2"=1'-0"

PROCEDURE FOR TIMBER PILE CAP REPLACEMENT:

- CLEAR SITE OF DEBRIS AND PREPARE GRADE FOR JACKING OPERATION.
- CLOSE BRIDGE SECTION TO TRAFFIC AND REMOVE ALL LOADS FROM THE WORK AREA.
- REMOVE CONNECTION BETWEEN TUB GIRDERS AND TIMBER PILE CAP AND BETWEEN TIMBER PILE CAP AND TIMBER PILES.
- REMOVE EXISTING VEHICLE BARRIER HORIZONTAL RAIL AND SUPPORT UTILITIES AS NECESSARY PRIOR TO JACKING OPERATIONS. SEE NOTE 5.
- INSTALL TEMPORARY SUPPORTS AND HYDRAULIC JACKS AT BOTH SIDES OF THE PILE UNDER THE CONCRETE TUB GIRDERS TO LIFT THEM AWAY FROM THE DAMAGED TIMBER PILE CAP.
- USE STEEL PLATES OR TIMBER PADS BETWEEN CONCRETE TUB GIRDERS AND JACKS TO DISTRIBUTE LOADS AND PREVENT DAMAGE TO EXISTING MEMBERS.
- OPERATE JACKS SIMULTANEOUSLY AND LIFT IN SMALL INCREMENTS (1/4") UNTIL ADEQUATE CLEARANCE IS OBTAINED BETWEEN TUB GIRDERS AND PILE CAP. ANTICIPATE 1" GAP.
- IT IS ASSUMED THE TUB GIRDERS ARE BONDED END TO END OVER EACH PILE CAP AND THE SPANS WILL NEED TO BE JACKED SIMULTANEOUSLY. AT THE CONTRACTOR'S OPTION, THE GIRDERS MAY BE SEPARATED.
- REMOVE DAMAGED TIMBER PILE CAP CAREFULLY TO AVOID DISTURBING ADJACENT MEMBERS (SEE NOTE 2).
- PREPARE PILE BEARING SURFACES; REPAIR OR SHIM AS NEEDED FOR PROPER BEARING, AND INSTALL ASPHALT FELT AS SPECIFIED.
- POSITION AND ALIGN NEW TIMBER PILE CAP; SEAT FULLY ON BEARINGS.
- GRADUALLY LOWER CONCRETE TUB GIRDERS IN SMALL INCREMENTS TO TRANSFER LOAD ONTO NEW PILE CAP.
- INSTALL CONNECTIONS AS REQUIRED.
- REMOVE JACKS AND TEMPORARY SUPPORTS.
- INSPECT HMA AND CLEAN SITE.
- ENGINEER SHALL INSPECT COMPLETED WORK BEFORE REOPENING BRIDGE TO TRAFFIC.
- ALL WORK SHALL BE PERFORMED IN ACCORDANCE WITH APPLICABLE OSHA SAFETY REQUIREMENTS.

NOTES:

1. CONTRACTOR SHALL NOT COMMENCE WORK UNTIL WORK PLAN SUBMITTAL FOR TIMBER PILE CAP REPLACEMENT AND TRAFFIC CONTROL PLANS ARE APPROVED.
2. TIMBER PILE CAP MAY BE REMOVED ONE AT A TIME OR SIMULTANEOUSLY.
3. DUE TO ACCESS LIMITATIONS, IT IS ANTICIPATED THAT THE NEW PILE CAP WILL NEED TO BE STAGED ADJACENT TO THE PIERS PRIOR TO JACK INSTALLATION. REFER TO PHOTOS 5 AND 6 ON SHEET S-3 FOR ACCESS CONDITIONS.
4. ALL DIMENSIONS ARE BASED ON FIELD MEASUREMENTS AND SHALL BE VERIFIED IN THE FIELD AS REQUIRED.
5. PROTECT VEHICLE BARRIER AND UTILITIES AND SUPPORT THROUGHOUT WORK.
6. ALLOWABLE SOIL BEARING PRESSURE 1500 PSF (ASSUMED PER IBC).
7. MAXIMUM 0.25" HEIGHT DISPARITY BETWEEN APPROACH ROADWAY AND HMA AT CENTERLINE AND SHOULDERS.
8. STAGING AND PARKING AREA IS AVAILABLE BETWEEN RIDGE ROAD AND BRIDGE.
9. ALL WORK MUST BE COMPLETED WITHIN THE EXISTING RIGHT-OF-WAY.
10. CLEARING OF VEGETATION MUST BE APPROVED BY THE ENGINEER.
11. THE MINIMUM JACK CAPACITY SHALL BE 10 TONS (20 KIPS) PER PILE AND 40 TONS (80 KIPS) FOR THE ENTIRE SPAN.

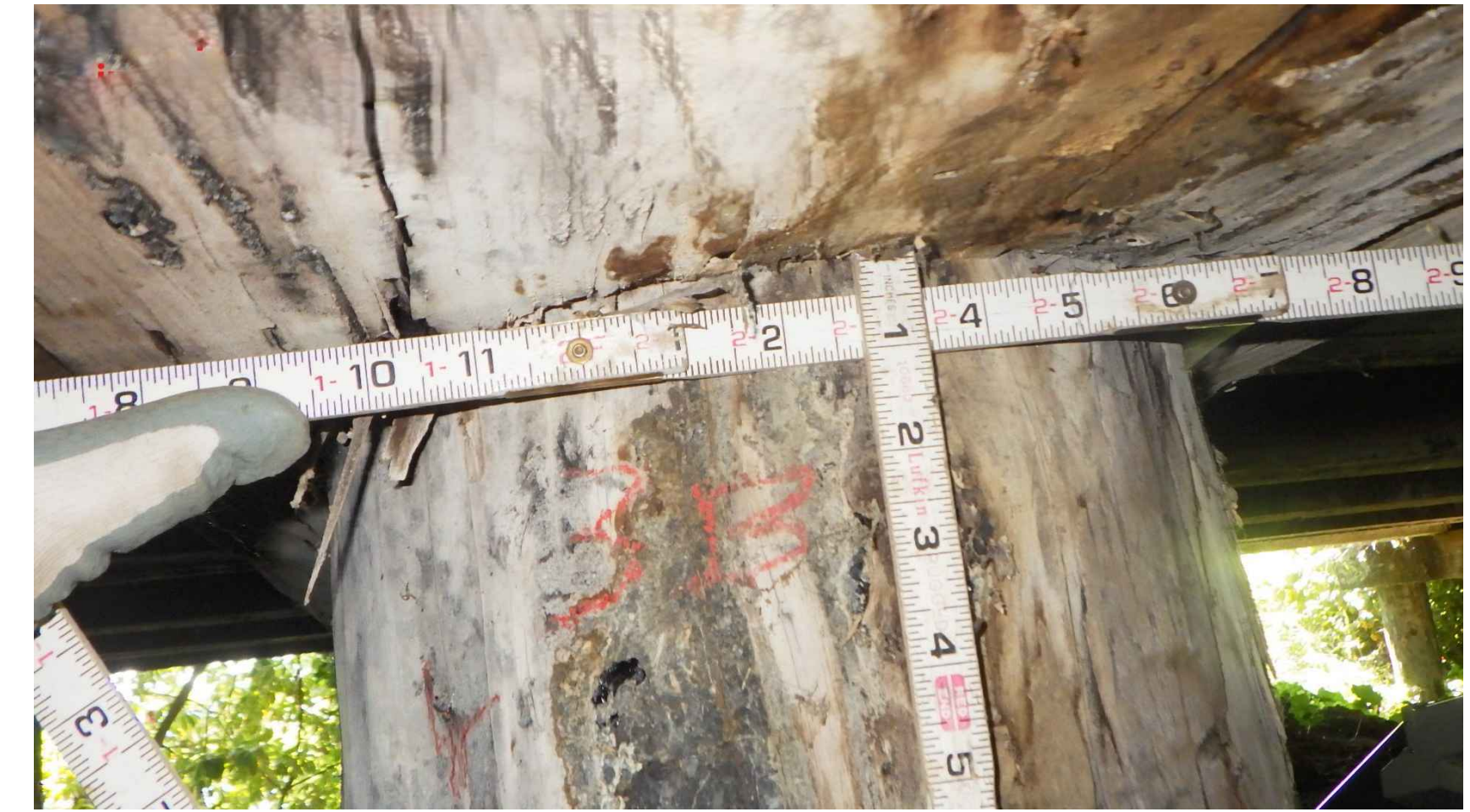
M:\Medina\25439.01 Overlake Drive East Bridge Repair\Plans\Structural\Structural_PLN.dwg, 3/17/2026 1:26 PM, STEPHEN MOORE



1 PHOTO - DAMAGED AREA
S-1 NTS



2 PHOTO - DAMAGED AREA
S-1 NTS



3 PHOTO - DAMAGED AREA
S-1 NTS



5 PHOTO - ACCESS CONDITION
S-1 NTS



COMMUNICATION
CONDUIT

6 PHOTO - ACCESS CONDITION
S-2 NTS



DUCTILE IRON
STORM DRAIN PIPE

4 PHOTO - EXISTING PIPE CROSSING
S-1 NTS



7 PHOTO - SPALLED CONCRETE AT TUB GIRDER
S-1 NTS



REMOVE ROD DOWELS
PRIOR TO LIFTING, TYP

8 PHOTO - REMOVAL OF ROD DOWELS
S-1 NTS

No.	DATE	REVISION

ISSUED FOR:

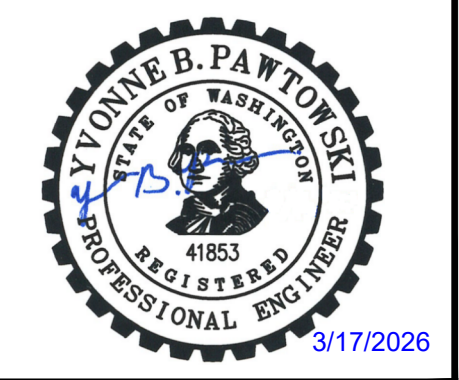
BID SET

ISSUE DATE:	MARCH 2026
APPROVED BY:	AQ
CHECKED BY:	ZK
DRAWN BY:	RAH
DESIGNER:	ZK
G & O JOB NO.:	25439.01
FILE:	S_BRDG_PLN.DWG

0 1" 2"
TWO INCHES AT FULL SCALE.
IF NOT, SCALE ACCORDINGLY

STRUCTURAL

PHOTO DETAILS



CITY OF MEDINA



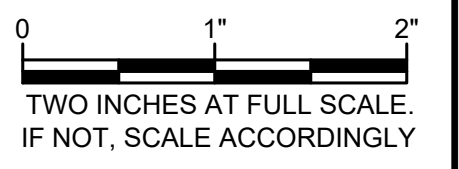
**OVERLAKE DRIVE
 EAST BRIDGE REPAIR**

No.	DATE	REVISION

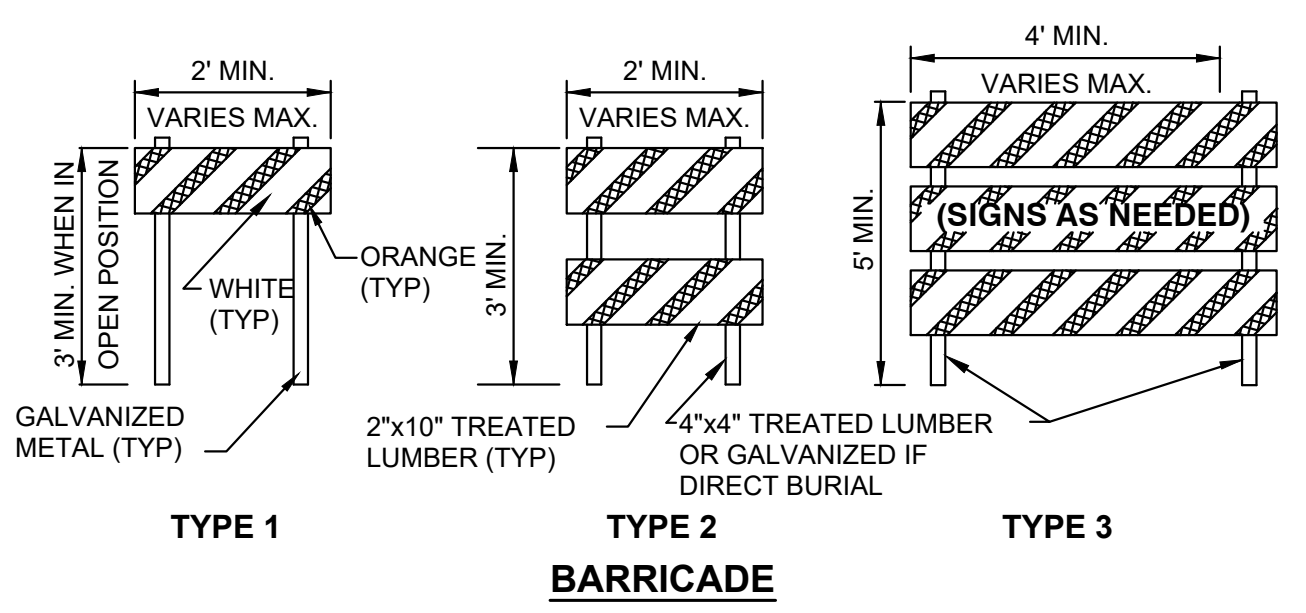
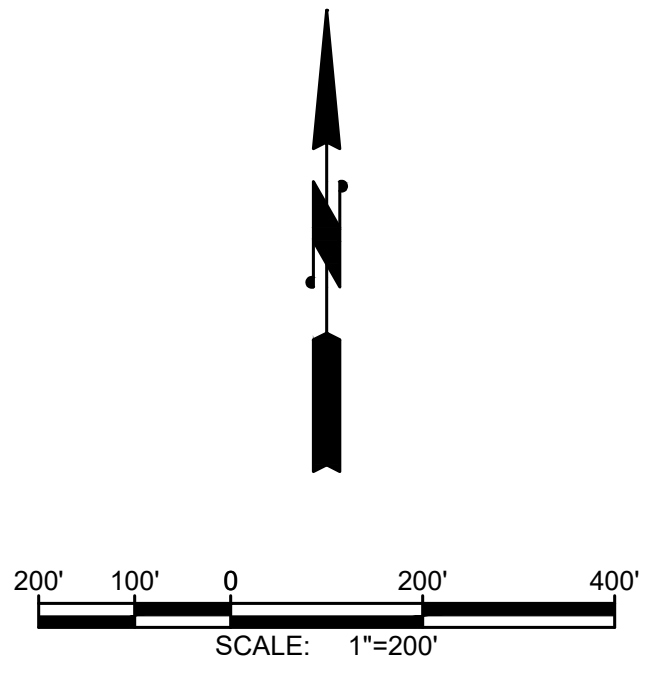
ISSUED FOR:

BID SET

ISSUE DATE:	MARCH 2026
APPROVED BY:	RWK
CHECKED BY:	RWK
DRAWN BY:	YBP
DESIGNER:	YBP
G & O JOB NO.:	25439.01
FILE:	DETOUR.DWG

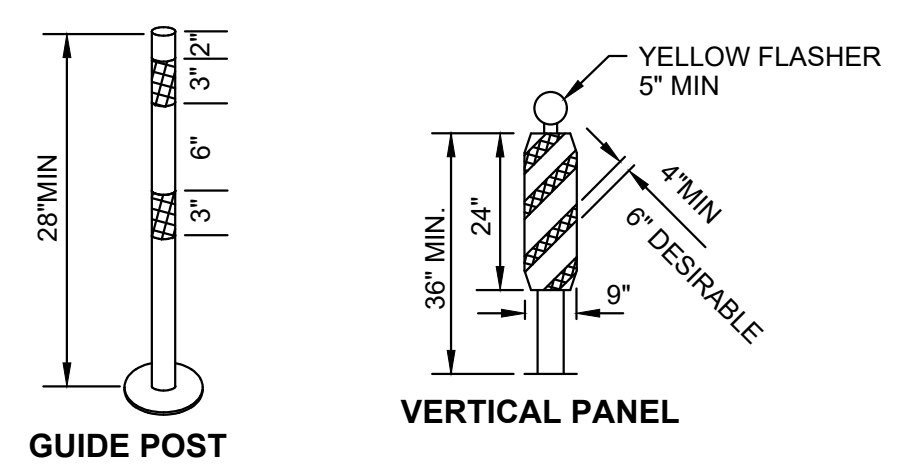
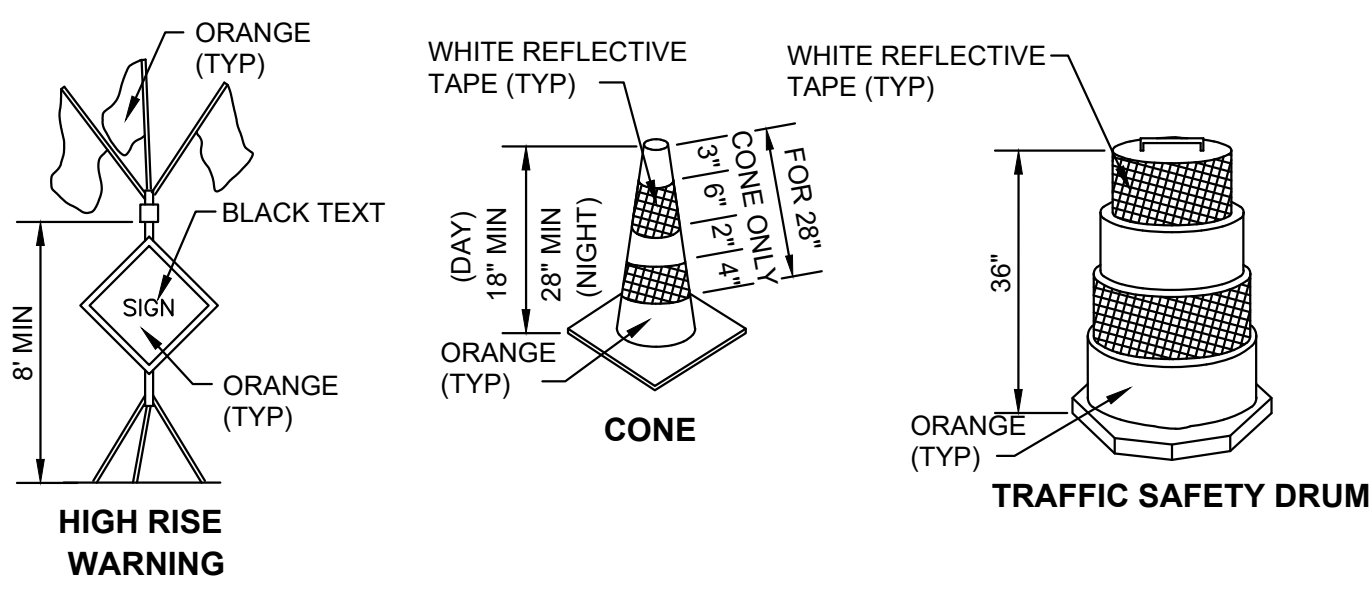


**TRAFFIC CONTROL
 PLAN AND DETAILS**



DETOUR CALLOUTS

- 1 R11-4, 60"x30" BLACK ON WHITE (TO BE PLACED ON BARRICADE TYPE 3 IN ROAD) **ROAD CLOSED LOCAL TRAFFIC ONLY**
- 2 M4-9L, 30"x24" BLACK ON ORANGE **DETOUR**
- 3 M4-9R, 30"x24" BLACK ON ORANGE **DETOUR**
- 4 SPECIAL, 60"x48" BLACK ON WHITE **ROAD CLOSED BEFORE RIDGE RD LOCAL TRAFFIC ONLY**
- 5 SPECIAL, 60"x48" BLACK ON WHITE **ROAD CLOSED AFTER RIDGE RD LOCAL TRAFFIC ONLY**
- 6 M4-8a, 30x24 BLACK ON ORANGE **END DETOUR**
- 7 R11-3, 60"x30" BLACK ON WHITE **ROAD CLOSED AHEAD LOCAL TRAFFIC ONLY**
- 8 D-3 60"x15" BLACK ON WHITE **OVERLAKE DR E**
- 9 W20-2, 48"x48" BLACK ON ORANGE **DETOUR AHEAD**
- 10 W20-1, 48"x48" BLACK ON ORANGE **ROAD WORK AHEAD**



TRAFFIC CONTROL DEVICES
 NOT TO SCALE

M:\Medina\25439.01 Overlake Drive East Bridge Repair\Plans\General\Detour.dwg, 3/17/2026 1:20 PM, YVONNE PAWLOWSKI